

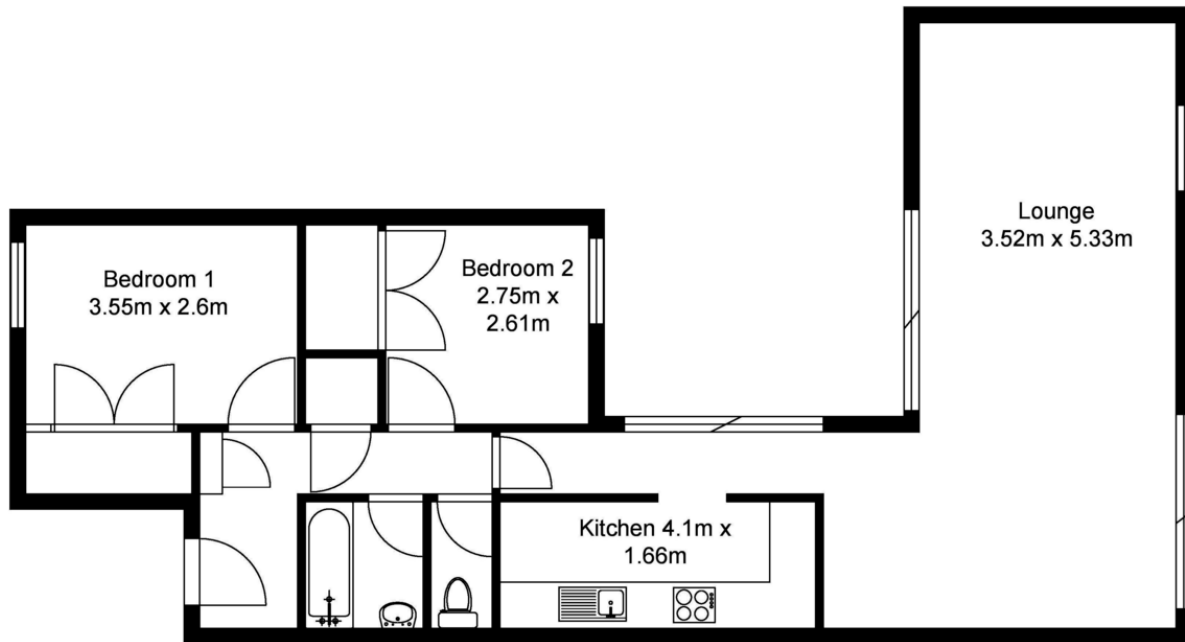
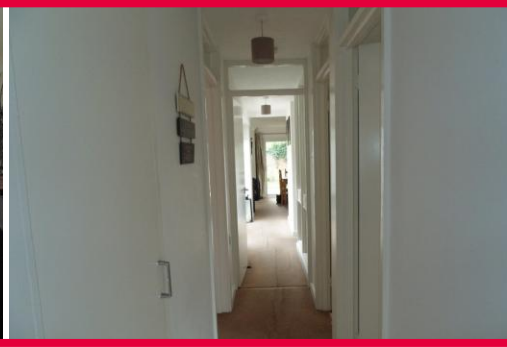


Pine Close | Horsell | Woking

£1,195 pcm

Living on one level, this property is well located in the popular area of Horsell. A great size throughout, with two double bedrooms, separate bathroom and WC, a rear garden, large reception room with doors to the rear garden and a hidden patio area filling the long kitchen with light.

- Two Double Bedrooms
- Separate Bathroom and WC
- Nice Location
- Super-Size Living Room
- Attractive Kitchen



FOR ILLUSTRATIVE PURPOSES ONLY - NOT TO SCALE

Whilst every effort has been made to ensure accuracy, all measurements and fixtures/ fittings are shown in an approximate location.

© Hestia Lettings and Management 2019

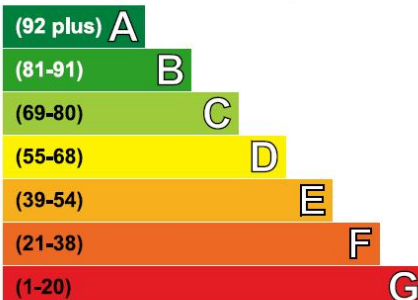
Contact Details

Argosy House
Collins Court
39 High Street
Cranleigh
GU6 8AS

www.hestiapropertylettings.co.uk
cranleigh@hestiapropertylettings.co.uk
01483 276565

Energy Efficiency Rating

Very energy efficient - lower running costs



Not energy efficient - higher running costs

Current	Potential
65	90

Agents Note: Whilst every care has been taken to prepare these particulars, they are for guidance purposes only. All measurements are approximate are for general guidance purposes only and whilst every care has been taken to ensure their accuracy, they should not be relied upon and potential buyers/tenants are advised to recheck the measurements