



Catteshall Lane

Godalming, Surrey, GU7 1LW

£750 pcm

Available now, this one-bedroom ground floor flat in a cottage style, character filled property. One of four flats the property has access to a communal garden but retains the privacy of its own front door. Located in Godalming the property has easy access to the High Street and both Godalming and Farncombe Station.



Property Features

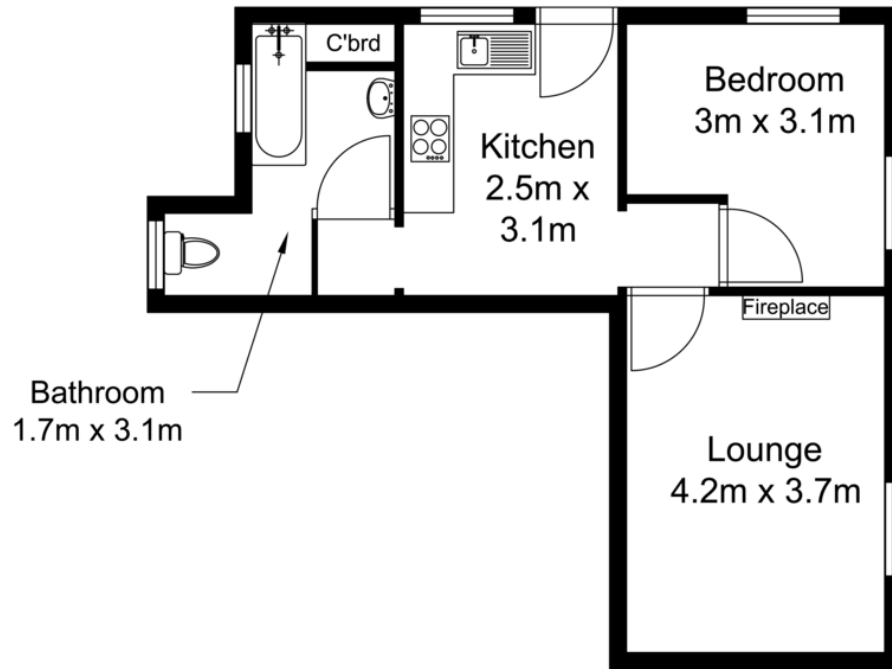
- Ground Floor
- Great Location
- Large Reception Room
- Well Presented
- On Road Parking
- Double Bedroom
- Communal Garden

Full Description

DISCRIPTION

We are pleased to bring to the market a ground floor 1 bedroom flat, which is one of four in this cottage style property. A good size throughout, the property is clean and well maintained. With its own front door and quiet tucked away location, the property is ideal for those who want their own sanctuary but with easy access to the High Street and both Godalming and Farncombe Stations. Available immediately. Strictly no pets.





FOR ILLUSTRATIVE PURPOSES ONLY - NOT TO SCALE

Whilst every effort has been made to ensure accuracy, all measurements and fixtures/ fittings are shown in an approximate location.

© Hestia Lettinas and Management 2019

Energy Efficiency Rating		Current	Potential
<i>Very energy efficient - lower running costs</i>			
(92 plus)	A		
(81-91)	B		
(69-80)	C		
(55-68)	D	57	61
(39-54)	E		
(21-38)	F		
(1-20)	G		
<i>Not energy efficient - higher running costs</i>			
England & Wales		EU Directive 2002/91/EC	