



60 Coleford Bridge Road  
Mytchett, Camberley, GU16 6DT

£1,100 pcm

This spacious, two double bedroom, semi-detached house is available now. Beautifully presented, having just received a complete redecoration and new carpets, this property is modern and fresh. With the driveway to the front, and a large garden to the rear. This property provides a lovely home.



# Property Features

---

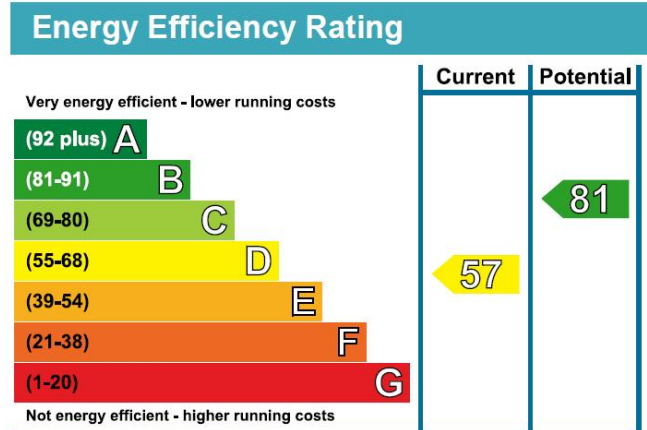
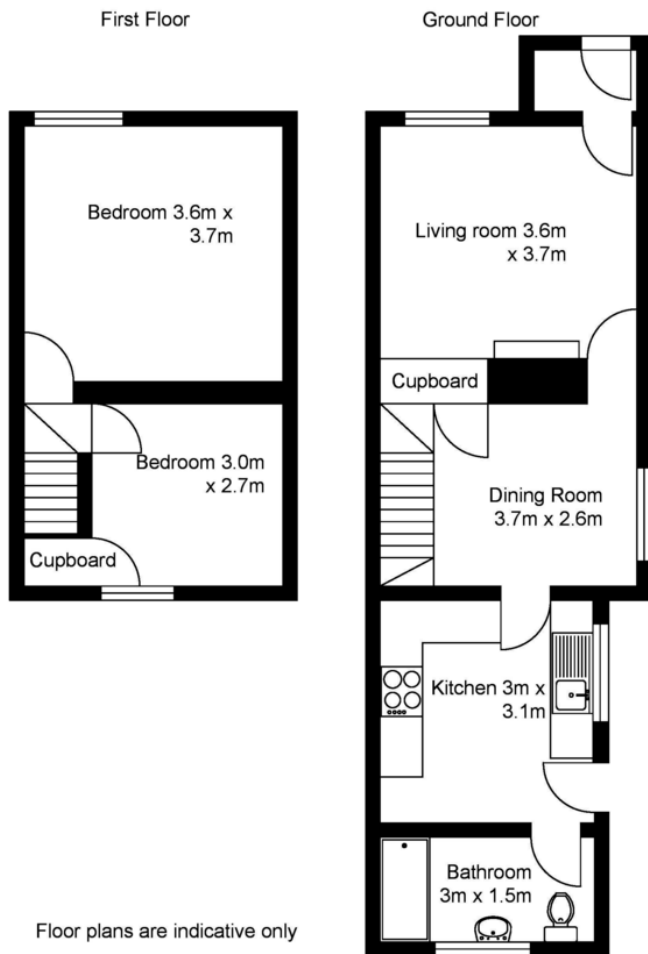
- Two Double Bedrooms
- Off Street Parking
- Large Garden
- Two Reception Rooms
- Modern Kitchen
- Beautifully Presented
- Spacious Ground Floor Bathroom
- Double Glazed
- Gas Central Heating

# Full Description

---







Argosy House  
Collins Court  
39 High Street  
Cranleigh  
GU6 8AS

[www.hestiapropertylettings.co.uk](http://www.hestiapropertylettings.co.uk)  
[cranleigh@hestiapropertylettings.co.uk](mailto:cranleigh@hestiapropertylettings.co.uk)  
01483 276565

Agents Note: Whilst every care has been taken to prepare these particulars, they are for guidance purposes only. All measurements are approximate and for general guidance purposes only and whilst every care has been taken to ensure their accuracy, they should not be relied upon and potential buyers/tenants are advised to recheck the measurements