

Plaistow Road

Kirdford, Billingshurst, RH14

This beautiful three-bedroom property is full of light. Many of the rooms are double aspect giving great views over the stunning countryside and farmland. Undergoing some refurbishment this charming home boasts a large garden and a practical open plan kitchen / diner.



Property Features

- Three Bedrooms
- Charming Character Property
- Rural Location
- Good Storage
- Large Open-plan Kitchen / Diner
- Triple Aspect Living Room
- Ground Floor WC
- Undergoing Refurbishments
- Available End of October

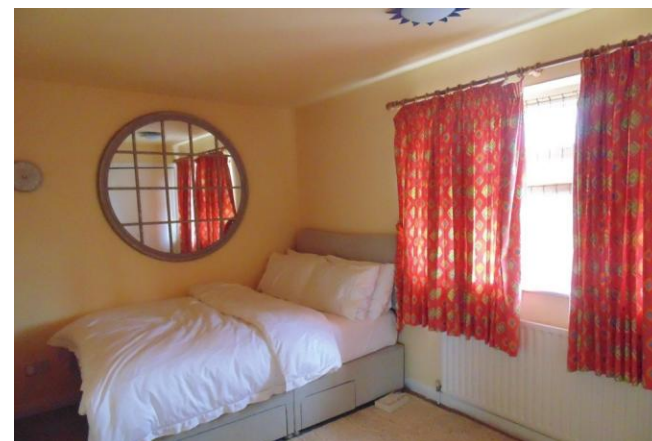
Full Description

This beautiful three-bedroom property is full of light. Many of the rooms are double aspect giving great views over the stunning countryside and farmland. On entering the property, you will find a welcoming entrance hall. To the left is the large triple aspect living room with fireplace. To the right is the open plan kitchen diner which leads to the boot room, giving access to the rear garden, and downstairs WC. On the first floor there are three bedrooms, all with fitted wardrobes. The substantial master bedroom is double aspect, the second bedroom is also a double and the third bedroom is a small double / large single. A family bathroom is also on the first floor and has a panel enclosed bath, shower attachment, WC and sink.

As you would expect the property has a mature large rear garden that wraps around the property. Surrounded by hedges and exceptionally private, this idyllic, countryside location provides an exception setting for this charming home.

The property will be undergoing various upgrades and improvements including: New carpets, redecoration, new cooker, repainted windows and upgraded electrics and consumer unit.

Available at the end of October on an unfurnished basis. Please note that the boiler is oil fired with mains water and sewerage.





Argosy House
Collins Court
39 High Street
Cranleigh
GU6 8AS

www.hestiaproperlyettings.co.uk
cranleigh@hestiaproperlyettings.co.uk
01483 276565

Agents Note: Whilst every care has been taken to prepare these particulars, they are for guidance purposes only. All measurements are approximate and for general guidance purposes only and whilst every care has been taken to ensure their accuracy, they should not be relied upon and potential buyers/tenants are advised to recheck the measurements

