

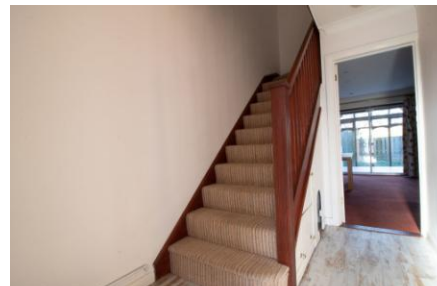


Grange Close

Godalming, GU7 1TX

£1,650 pcm

New to the market! This three-bedroom home has many benefits including a garage, conservatory and a ground floor WC. There is excellent storage throughout, including a utility cupboard on the ground floor and fitted wardrobes in each bedroom. In a superb location, this property is a must see.



Property Features

- Three Bedrooms
- Appliances
- Drive
- Available Now
- Garage in Block
- Beautiful Kitchen
- Conservatory
- Downstairs WC
- Gas Central Heating
- Gated Development

Full Description

Grange Close is a popular gated development off Cateshall Road. This provides fantastic proximity to the High Street, Godalming Station and Farncombe Station.

The property has a drive to the front and a garage in a block. The development also provides visitor spaces.

Inside, on the ground floor there is a WC and cupboard that acts as a utility cupboard. The kitchen is cheerful and well equipped - Oven, hob and extractor; Washing Machine: Dishwasher: Free Standing Fridge Freezer.

There is a large reception room which leads to the conservatory and then to the rear garden.

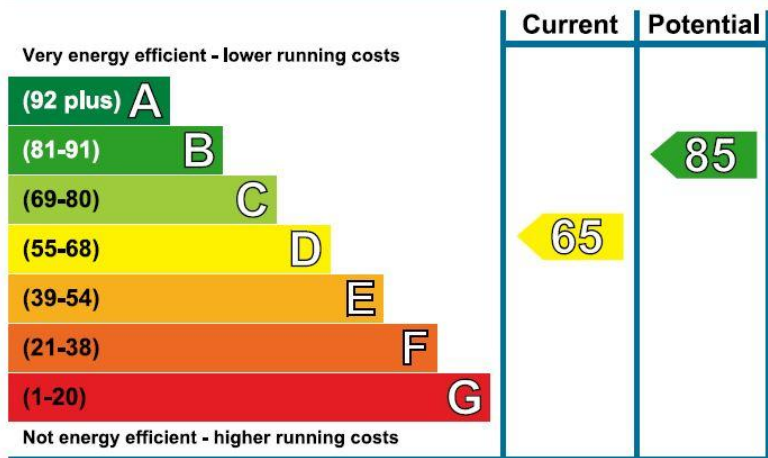
On the first floor there are three good size bedrooms, each with fitted wardrobes and two with shelving. An airing cupboard on the landing provides further storage.

Practical and well laid out, this property provides a home, not just a house, and is available now.

Please note that due to the corona virus viewings will only be undertaken in strict conditions. Please ensure that only two people attend the viewing and no children. You must be symptom free and not have been in contact with anyone who has symptoms in the last 14 days. Proxy viewings or remote viewings via video communication may be arranged.



Energy Efficiency Rating



Argosy House
Collins Court
39 High Street
Cranleigh
GU6 8AS

www.hestiaproperlyettings.co.uk
cranleigh@hestiaproperlyettings.co.uk
01483 276565

Agents Note: Whilst every care has been taken to prepare these particulars, they are for guidance purposes only. All measurements are approximate are for general guidance purposes only and whilst every care has been taken to ensure their accuracy, they should not be relied upon and potential buyers/tenants are advised to recheck the measurements