



Stane Street  
Ockley, Dorking,

£1,250 pcm

Bursting with character this two-bedroom cottage is located in the heart of Ockley. Available early December.





## Property Features

---

- Character Cottage
- Two Bedrooms
- Modern Kitchen
- Sitting Room
- Off Street Parking
- End of Terrace
- Front & rear gardens
- Gas Central Heating
- Beautiful Location
- Strictly NO PETS

## Full Description

---

A character filled cottage, situated close to Ockley village centre.

The property comprises on the ground floor; modern fitted kitchen/breakfast room with integral oven, gas hob, space and plumbing for washing machine and dishwasher, under stairs cupboard and door to rear garden.

A second door leads through to a light and airy sitting room. Stairs from the kitchen lead to a double bedroom, one larger double bedroom and the bathroom on the first floor.

Internally the property has no restricted head height and is decorated in light neutral tones.

Externally the property has a front and rear garden. The front garden is mostly laid to lawn with a footpath. The rear garden contains decking a shingle pathway and a small storage shed. There is a car parking area to the rear of the property with a gate and path leading to the rear garden.

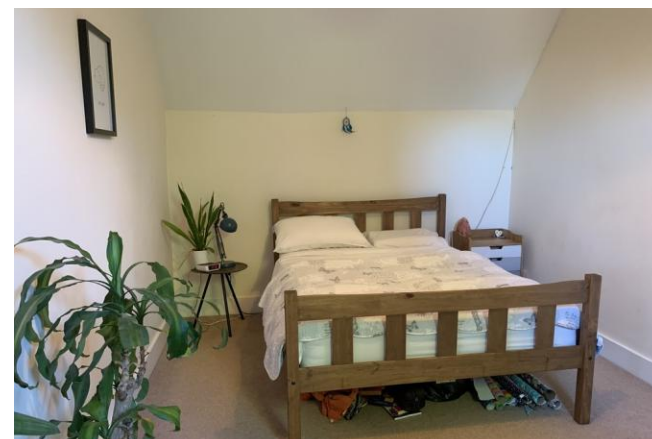
Ockley is delightful village located near to the Surrey/Sussex border with the nearby towns of Dorking and Horsham offering a range of shopping and leisure facilities. Ockley has a village shop/post office, farm shop, petrol station and public houses and is located within the Surrey Area of Outstanding Natural Beauty.

Gatwick airport is approximately 20 miles distant and London approximately 31 miles.

The nearest train station is Ockley Station which offers services direct to London Victoria in just over an hour.

Mains Water, Electricity, Drainage and Gas

On receipt of your initial enquiry, Hestia Lettings & Management will pass on your contact details and information to the landlord. Viewings will then be arranged by the Landlord directly.





Argosy House  
Collins Court  
39 High Street  
Cranleigh  
GU6 8AS

[www.hestiapropertylettings.co.uk](http://www.hestiapropertylettings.co.uk)  
[cranleigh@hestiapropertylettings.co.uk](mailto:cranleigh@hestiapropertylettings.co.uk)  
01483 276565

Agents Note: Whilst every care has been taken to prepare these particulars, they are for guidance purposes only. All measurements are approximate and for general guidance purposes only and whilst every care has been taken to ensure their accuracy, they should not be relied upon and potential buyers/tenants are advised to recheck the measurements

